

## DAFTAR PUSTAKA

Alafasy, Misyari Rasyid. "Q.s Al-Imran Ayat 130."

Alfurkaniati. 2017. *Pengantar Akuntansi I*. 2nd ed. Medan: Madenatera.

Ambreen, Sadaf, and Aftab, Junaid. 2018. "Impact of Free Cash Flow on Profitability of Firms Listed in Karachi Stock Euro-Asian Journal of Economics and Finance Impact of Free Cash Flow on Profitability of Firms Listed in Karachi Stock Exchange." *Euro-Asian Journal of Economics and Finance* 4(4): 113–22.

Aslami, Nuri, Nurul Izzah, and Azhari Akmal Tarigan. 2021. "The Concept Of Taradin In Online Buying The Study of Surah An-Nisa' Version 29." *Al-Masharif: Jurnal Ilmu Ekonomi dan Keislaman* 9(2): 235–50.

Al Azhar, Stai. 2018. "Akuntansi Dalam Perspektif Maqashid Syariah; Analisis KHES Dengan Masalah Najmuddin Ath-Thufi Accounting in the Sharia Maqashid Persecution; KHES Analysis with Masalah Najmuddin Ath-Thufi."

Bahri, Syaiful. 2022. "Pengaruh Pembiayaan Murabahah, Mudharabah, Dan Musyarakah Terhadap Profitabilitas." *JAS (Jurnal Akuntansi Syariah)* 6(1): 15–27.

Dkk, Dwi Martani. 2015. *Akuntansi Keuangan Menengah Berbasis PSAK*. Jakarta Selatan.

Dkk, Sylvia Veronica. 2015. *Akuntansi Keuangan Menengah Berbasih PSAK*. Jakarta Selatan.

Hery. 2016. *Analisis Laporan Keuangan Integrated and Comprehensive Edition*. Jakarta: Kompas Gramedia.

Ii, B A B, and A Landasan Teori. “A. Wangsawidjaja Z, *Pembiayaan Bank Syariah* , (Jakarta: PT Gramedia, 2012), Hlm. 89.”

Ikhsan Arfan, et. al. 2014. *Metodologi Penelitian Bisnis Untuk Akuntansi Dan Manajemen*. Bandung: Ciptapustaka Media.

Irwanto, Abdul Kohar. “*Pengaruh Arus Kas Terhadap Profitabilitas Dan Kinerja Saham Emiten Kompas 100 Di Bursa Efek Indonesia Samsudin Sitepu Dan Lengkap . Laporan Arus Kas Menyediakan Informasi Mengenai Jumlah Kas Yang Keuangan Perusahaan . Manajemen Dalam Memperbaiki Struktur .*”

Isnaini Harahahap, Yenni samri juliati nasution, Marliyah, Rahmi syahriza. 2017. *Hadist-Hadits Ekonomi*. 2nd ed. Jakarta: Kencana.

Kamilah. 2014. *Buku Akuntansi Syariah-Kasus Implementasi Di Masy an*. Kamilah.Pdf. Medan: IAIN PRESS.

Kasmir. 2009. *Pengantar Manajemen Keuangan*. Jakarta: Kencana.

Kasmir. 2010. *Pengantar Manajemen Keuangan*. Jakarta: Prenadamedia Group.

lawrence J Gitman. 2016. *Principles Of Managarial Finance*. New York: 2016.

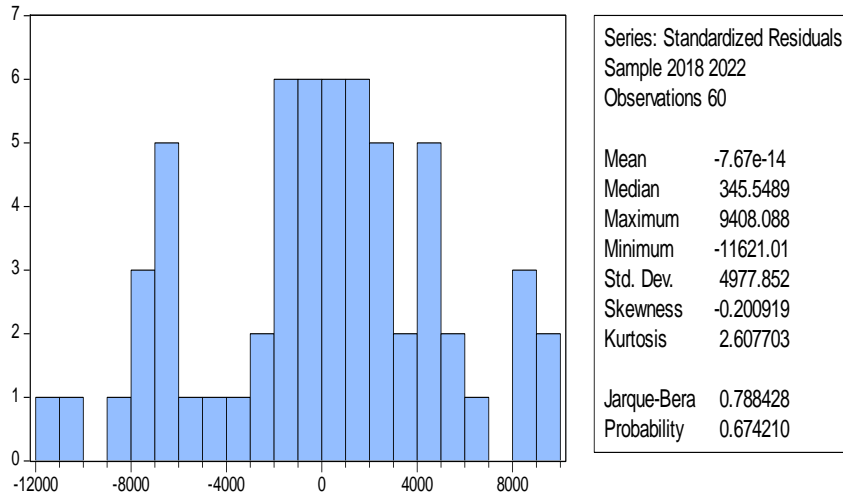
Marliyah, Kamilah K, Rahmadina. 2021. “*The Effect of Murabahah Financing and Profit Sharing on the Profitability of Return on Assets (ROA) Through Non Performing Financing (NPF) In Sharia Commercial Banks.*” *Budapest International Research and Critics Institute-Journal (BIRCI-Journal)* 4(3): 4873–86.

Maulana, M, Weri Mahendra, and Lili Purnama. 2022. “*DETERMINAN PROFITABILITAS PERUSAHAAN.*” 6(1): 93–109.

- Napitupulu, Ferdinand. 2020. “*Pengaruh Arus Kas Operasi , Penjualan Dan Likuiditas Terhadap Profitabilitas Pada PT Kencana Permata Nusantara Periode 2014-2018.*” 1(2): 70–79.
- Ningrum, D P, J Supriyanto, 2018. “ *Nilai Perusahaan Pada Perusahaan Sub Sektor Makanan Dan Minuman Yang Terdaftar Di Bursa Efek Indonesia Periode 2018* ” Jurnal Online Mahasiswa
- Noor, Ahmad Ikliluddien, Ceacilia Srimindarti. 2022. “*Dampak Implementasi CSR Dan Ukuran Perusahaan Terhadap Kinerja Keuangan Perusahaan Sektor Infrastruktur.*” AKTSAR: Jurnal Akuntansi Syariah 5(1): 88.
- Pangartiningsih, Siammi. 2016. “*Pengaruh Arus Kas Dan Modal Kerja Terhadap Tingkat Profitabilitas.*” Jurnal Ilmu dan Riset Akuntansi 5(1): 1–15.
- Putri, L. Rizkyanti, and Lucy Sri Musmini. 2019. “*Pengaruh Perputaran Kas Terhadap Profitabilitas Pada Pt. Tirta Mumbul Jaya Abadi Singaraja Periode 2013-2018.*” Jurnal Akuntansi Profesi 3(2): 142–52.
- Rahmani, N A B, D Lazuardi, 2020. “*Analysis of the Effect of Islamic Income Ratio (ISIR) on The Profitability of Sharia Banks in Indonesia.*” *Journal of Management* 1–5.
- Sitompul, Mhd. Syahman, Nurlaila Harahap, Hendra Harmain. 2015. “*AKUNTANSI MASJID.Pdf.*”
- Tarigan, Azhari Akmal. 2016. *Tafsir Ayat-Ayat Ekonomi (Tela’ah Atas Simpul-Simpul Ekonomi Dan Bisnis Dalam Al-Qur’an.* Medan: Febi UIN-SU Press.
- Wulandari, Anisya Septi, and Iwan Setya Putra. 2018. “*Analisis Penerapan Sistem Informasi Manajemen Barang Daerah Dengan Metode Technology Acceptance*

*Model Pada Pemerintah Kabupaten Blitar.” Riset Mahasiswa Ekonomi (RITMIK)*  
2: 239–58.

## LAMPIRAN



**PT WASKITA KARYA (PERSERO) Tbk  
DAN ENTITAS ANAK  
LAPORAN PERUBAHAN EKUITAS KONSOLIDASIAN**  
Untuk Tahun-Tahun yang Berakhir 31 Desember 2019 dan 2018  
(Dalam Rupiah Penuh)

**PT WASKITA KARYA (PERSERO) Tbk  
AND SUBSIDIARIES  
CONSOLIDATED STATEMENTS OF CHANGES IN EQUITY**  
For the Years Ended Then December 31, 2019 and 2018  
(In Full of Rupiah)

Dapat Dibagikan kepada Pemilik Entitas Individu/ Attributable to the Owners of the Parent											
Catatan/ Notes	Tambahkan Modal Dawar/ Additional Paid-in Capital		Saldo Awal/ Retained earnings			Komponen Ekuitas Lainnya/ Other Components of Equity			Kepemilikan Non-Pengendali/ Non-controlling Interest		Jumlah Ekuitas/ Total Equity
	Rp	Rp	Rp	Rp	Rp	Rp	Rp	Rp	Rp		
<b>SALDO PER 31 DESEMBER 2017</b>											
	1.937.369.259.999	5.487.014.440.883	900.338.115.937	5.780.142.991.877	6.681.081.072.814	(7.389.572.842)	988.308.951.702	14.098.026.289.336	8748.308.526.119	27.5442.4309.495	BALANCE AS OF DECEMBER 31, 2017
Dividendo Umum	38	--	--	(62.536.721.412)	--	--	--	--	--	--	General Dividend
Opis Saham	--	(668.091.840)	--	--	--	--	--	(668.091.840)	--	(668.091.840)	Stock Option
Dikaren Tunai	--	--	--	(78.342.383.488)	(78.342.383.488)	--	--	(78.342.383.488)	--	(78.342.383.488)	Cash Dividend
Kepemilikan Non-Pengendali	46	--	--	--	--	--	--	1.480.886.491.663	--	1.480.886.491.663	Non-controlling Interest
Surplus Revaluasi Aset Tetap	--	--	--	--	--	202.948.717.891	--	--	--	202.948.717.891	Revaluation Surplus on Fixed Assets
Laba Tahun Berjalan	--	--	--	3962.838.031.865	3962.838.031.865	--	--	6967.258.973.694	--	6967.258.973.694	Profit in the Current Year
Penyesuaian atas Perubahan Kepemilikan atas Entitas Anak	--	8.578.872.194	--	482.038.538.835	482.038.538.835	--	(8.330.478.069)	578.285.931.960	--	578.285.931.960	Adjustment for Changes Ownership in Subsidiaries
Pengukuran Kembali Program Imbalan Pasti	--	--	--	27.790.985.459	27.790.985.459	--	--	27.790.985.459	--	27.790.985.459	Remeasurement Defined Benefits Plans - Net
Saldo Kuan Pengalihan Laporan Keuangan dari Kegiatan Usaha Luar Negeri	--	--	--	--	--	187.848.004.154	--	187.848.004.154	--	187.848.004.154	Exchange Rates Difference on Translation of Financial Statements & Foreign Operations
<b>SALDO PER 31 DESEMBER 2018</b>											
	1.937.369.259.999	5.932.026.382.437	1.583.434.837.348	8793.988.422.956	10.367.408.363.385	11.838.992.112	92.987.198.524	14.091.116.985.377	10.866.963.686.498	38.837.118.709.687	BALANCE AS OF DECEMBER 31, 2018
Dividendo Umum	38	--	--	(8.899.000.863)	--	--	--	--	--	--	General Dividend
Dikaren Tunai	--	--	--	(69.709.507.896)	(69.709.507.896)	--	--	(69.709.507.896)	--	(69.709.507.896)	Cash Dividend
Kepemilikan Non-Pengendali	46	--	--	--	--	--	--	259.023.528.924	--	259.023.528.924	Non-controlling Interest
Laba Tahun Berjalan	--	--	--	898.142.364.887	898.142.364.887	--	--	907.968.003.004	--	907.968.003.004	Profit in the Current Year
Pengukuran Kembali Program Imbalan Pasti	--	--	--	(6.427.265.899)	(6.427.265.899)	--	--	(6.427.265.899)	--	(6.427.265.899)	Remeasurement of Defined Benefits Plans - Net
Saldo Kuan Pengalihan Laporan Keuangan dari Kegiatan Usaha Luar Negeri	--	--	--	--	--	8.713.634.828)	--	(8.713.634.828)	--	(8.713.634.828)	Exchange Rates Difference on Translation of Financial Statements & Foreign Operations
<b>SALDO PER 31 DESEMBER 2019</b>											
	1.937.369.259.999	5.932.026.382.437	1.672.393.289.213	8.661.016.886.115	10.231.488.811.287	8.674.457.288	92.987.198.524	17.043.487.589.571	11.208.891.137.428	38.118.468.188.999	BALANCE AS OF DECEMBER 31, 2019

Ng

**PT WASKITA KARYA (PERSERO) Tbk  
DAN ENTITAS ANAK  
LAPORAN ARUS KAS  
KONSOLIDASIAN**  
Untuk Tahun-Tahun yang Berakhir  
31 Desember 2019 dan 2018  
(Dalam Rupiah Penuh)

**PT WASKITA KARYA (PERSERO) Tbk  
AND SUBSIDIARIES  
CONSOLIDATED STATEMENTS  
OF CASH FLOWS**  
For the Years Then Ended  
December 31, 2019 and 2018  
(In Full of Rupiah)

	Notes	2019 Rp	2018 Rp	
<b>ARUS KAS DARI AKTIVITAS OPERASI</b>				<b>CASH FLOWS FROM OPERATING ACTIVITIES</b>
Penerimaan Kas dari Penjualan		53.622.470.304.152	46.153.481.633.794	Cash Receipts from Customers
Pengeluaran Kas kepada Pemasok		(9.812.397.634.626)	(12.146.152.132.659)	Cash Paid to Suppliers
Pengeluaran Kas kepada Karyawan dan Direksi		(736.179.050.513)	(1.034.852.971.320)	Cash Paid to Employees and Directors
Kas Dihadirkan dari Operasi		13.023.993.616.013	5.972.476.529.815	Cash Generated from Operations
Pembayaran Beban Keuangan		(1.823.812.200.163)	(94.805.443.796)	Payment for Financial Charges
Penerimaan Restitusi Pajak		34.435.395.994	--	Receipt from Tax Restitutions
Pembayaran Pajak		(2.500.267.370.782)	(1.566.131.007.443)	Payment for Taxes
Kas Bersih Diperoleh dari Aktivitas Operasi		<b>9.014.249.440.062</b>	<b>4.011.540.078.574</b>	<b>Net Cash Provided by Operating Activities</b>
<b>ARUS KAS DARI AKTIVITAS INVESTASI</b>				<b>CASH FLOWS FROM INVESTING ACTIVITIES</b>
Penerimaan dari Ventura Bersama		95.680.664.958	125.521.828.745	Receipt from Joint Ventures
Penempatan pada Ventura Bersama		(2.860.216.805.022)	(671.698.742.646)	Placement of Joint Ventures
Penempatan Deposito		(16.255.472.785)	(2.272.636.099.368)	Placement of Time Deposits
Penempatan Pencairan Deposito		2.089.000.000.000	1.821.534.513.690	Receipt from Time Deposits
Penerimaan Dividen dari Entitas Anak		--	484.030.710.810	Receipt of Dividend from Subsidiaries
Pendanaan Aset Tetap		(2.742.933.949.138)	(2.962.349.807.081)	Acquisition of Fixed Assets
Penambahan Properti Investasi		(63.866.964.995)	(59.733.151.815)	Acquisition of Investment Properties
Pendanaan Aset Takberwujud		(1.983.959.274.305)	(5.181.992.508.734)	Acquisition of Intangible Assets
Penempatan Investasi pada Entitas Asosiasi dan Jangka Panjang Lainnya	13	(1.597.673.534.941)	(2.801.102.344.000)	Placement of Investment in Associates and Long-Term Investments
Penerimaan atas Pelepasan Penyertaan Pada Entitas Anak dan Entitas Asosiasi		1.657.200.000.000	2.657.143.347.539	Receipt from Disposals of Investment in Subsidiaries and Associates
Pinjaman Diberikan kepada Entitas Asosiasi		(2.295.146.709)	214.527.969.072	Loans to Associates
Pengurangan Penyertaan pada Entitas Anak dan Entitas Asosiasi		--	(91.396.766.625)	Reduction of Investment in Subsidiaries and Associates
Kas Bersih Digunakan untuk Aktivitas Investasi		<b>(4.924.743.305.937)</b>	<b>(8.768.151.890.463)</b>	<b>Net Cash Used in Investing Activities</b>
<b>ARUS KAS DARI AKTIVITAS PENDANAAN</b>				<b>CASH FLOWS FROM FINANCING ACTIVITIES</b>
Pidanaan Utang Obligasi	51	(2.000.000.000.000)	(50.000.000.000)	Payment of Bonds Payable
Penerimaan Rekening Giro dan Deposito Berjangka		99.702.739.827	636.933.783.652	Interest Income from Current Account and Time Deposit
Pembayaran Beban Keuangan		(3.642.809.954.485)	(1.611.334.640.902)	Payment for Financial Charges
Pembayaran Emisi Obligasi	51	(12.622.475.202)	(41.953.936.572)	Bonds Issuance Costs
Penerimaan Pencairan Obligasi	51	3.645.750.000.000	5.154.250.000.000	Receipt from Bonds Issuance
Penerimaan Pinjaman Bank	51	101.597.843.065.552	36.883.247.775.045	Receipt from Bank Loans
Pembayaran Pinjaman Bank	51	(6.874.491.736.591)	(76.733.808.263.389)	Payment of Bank Loans
Pembayaran Dividen Tunai		(900.709.745.083)	(776.342.383.468)	Payment of Cash Dividend
Penerimaan Pinjaman Lembaga Keuangan Non-Bank	51	1.292.187.576.508	979.341.822.975	Receipt from Financial Institution Non Bank
Pembayaran Pinjaman Lembaga Keuangan Non-Bank	51	--	(2.248.009.712.076)	Payment to Financial Institution Non Bank
Penerimaan Surat Utang Jangka Menengah	51	700.000.000.000	1.144.403.604.859	Receipt from Medium Term Notes
Pembayaran Surat Utang Jangka Menengah	51	(779.207.690.987)	(786.371.433.625)	Payment of Medium Term Notes
Penerimaan Setoran dari Entitas Non-Pengendali		269.302.508.934	1.512.726.235.858	Receipt from Non-controlling Interest
Kas Bersih Diperoleh dari Aktivitas Pendanaan		<b>4.334.944.286.473</b>	<b>6.691.082.849.457</b>	<b>Net Cash Provided by Financing Activities</b>
<b>RENAIKAN (PENURUNAN) BERSIH KAS DAN SETARA KAS</b>				<b>NET INCREASE (DECREASE) IN CASH AND CASH EQUIVALENTS</b>
		<b>(1.575.549.579.402)</b>	<b>4.934.471.277.568</b>	
<b>KEUNTUNGAN (KERUGIAN) SELISIH KURS YANG BELUM DIREALISASI</b>				<b>UNREALIZED GAIN (LOSS) ON FOREIGN EXCHANGE RATE</b>
		<b>(1.818.609.407)</b>	<b>11.113.410.916</b>	
<b>EFEK DIESTASI</b>				<b>EFFECT ON DIVESTMENT</b>
		<b>--</b>	<b>(188.869.056.030)</b>	
<b>KAS DAN SETARA KAS PADA AWAL TAHUN</b>				<b>CASH AND CASH EQUIVALENTS AT THE BEGINNING OF YEAR</b>
		<b>10.845.678.217.201</b>	<b>6.088.962.586.747</b>	
<b>KAS DAN SETARA KAS PADA AKHIR TAHUN</b>				<b>CASH AND CASH EQUIVALENTS AT THE END OF YEAR</b>
	3	<b>9.258.310.928.392</b>	<b>10.845.678.217.201</b>	

Rekonsiliasi liabilitas yang timbul dari aktivitas pendanaan  
(Catatan 50)

Reconciliation of liabilities arising from financing activities  
(Note 50)

Lihat catatan atas laporan keuangan konsolidasian yang merupakan bagian yang tidak terpisahkan dari laporan keuangan konsolidasian

See accompanying notes to consolidated financial statements which are an integral part of the consolidated financial statements

**PT WASKITA KARYA (PERSERO) Tbk  
DAN ENTITAS ANAK  
LAPORAN LABA RUGI DAN  
PENGHASILAN KOMPREHENSIF LAIN  
KONSOLIDASIAN**

Untuk Tahun-Tahun yang Berakhir  
31 Desember 2019 dan 2018  
(Dalam Rupiah Penuh)

**PT WASKITA KARYA (PERSERO) Tbk  
AND SUBSIDIARIES  
CONSOLIDATED STATEMENTS OF  
PROFIT OR LOSS AND  
OTHER COMPREHENSIVE INCOME**

For the Years Then Ended  
December 31, 2019 and 2018  
(In Full of Rupiah)

	Catatan/ Notes	2019	2018	
		Rp	Rp	
Pendapatan Usaha	30, 55	31.387.389.629.869	48.788.990.838.822	Revenues
Beban Pokok Pendapatan	40	(25.782.746.866.464)	(39.926.332.089.924)	Cost of Revenues
<b>LABA BRUTO</b>		<b>5.604.642.763.405</b>	<b>8.862.658.748.898</b>	<b>GROSS PROFIT</b>
Beban Penjualan	41	(5.1589.935.546)	(5.205.890.476)	Selling Expenses
Beban Umum dan Administrasi	41	(1.319957.348.117)	(1.616.540.079.059)	General and Administrative Expenses
Beban Pajak Final	11	(706417.381.314)	(1.489.515.370.042)	Final Tax Expenses
Pendapatan Bunga		957.884.130.420	648.047.194.568	Interest Income
Kuntungan (Kerugian) Selisih Kurs - Bersih		(12551.246.681)	11.863.388.237	Gain (Loss) on Foreign Exchange Rates - Net
Pendapatan Lain-lain	42	965.263.113.888	2025.109.357.243	Other Income
Beban Lain-lain	43	(197802.480.370)	(423.475.576.187)	Other Expenses
<b>LABA SEBELUM BEBAN KEUANGAN, BAGIAN LABA BERSIH ENTITAS ASOSIASI DAN VENTURA BERSAMA</b>		<b>5239.471.615.685</b>	<b>7966.901.773.182</b>	<b>PROFIT BEFORE FINANCIAL CHARGES, EQUITY IN NET INCOME OF ASSOCIATES AND JOINT VENTURES</b>
Beban Keuangan	44	(3.620533.969.507)	(2.459.241.670.378)	Financial Charges
Bagian Laba (Rugi) Bersih Entitas Asosiasi dan Ventura Bersama	45	(290287.684.339)	28.782.401.204	Equity & Net Income (Loss) of Associates and Joint Ventures
<b>LABA SEBELUM PAJAK</b>		<b>1328.649.961.839</b>	<b>5536.442.504.008</b>	<b>PROFIT BEFORE TAX</b>
Beban Pajak Penghasilan	11	(299751.593.948)	(416.874.798.455)	Income Tax Expenses
<b>LABA TAHUN BERJALAN</b>		<b>1028.898.367.891</b>	<b>4619.567.705.553</b>	<b>PROFIT FOR THE YEAR</b>
<b>PENGHASILAN KOMPREHENSIF LAIN</b>				<b>OTHER COMPREHENSIVE INCOME</b>
Pos-pos yang Tidak Akan Direklasifikasi Kemudian ke Laba Rugi				Items that Will Not Be Reclassified Subsequently to Profit and Loss
Surplus Revaluasi Aset Tetap Pengukuran Kembali Program Imbalan Pasti - Bersih		-	342.948.717.891	Revaluation Surplus on Fixed Assets Remeasurement of Defined Benefit Obligations - Net
Pos-pos yang Akan Direklasifikasi Kemudian ke Laba Rugi				Items that Will Be Reclassified Subsequently to Profit and Loss
Selisih Kurs Perjabaran Laporan Keuangan dari Kegiatan Operasi Luar Negeri		(4713.634.828)	18.748.604.154	Exchange Difference on Translation of Financial Statements in Foreign Operational
Penghasilan (Beban) Komprehensif Lain Tahun Berjalan		(66140.930.727)	289.488.287.504	Total Other Comprehensive Income (Expenses) For The Year
<b>TOTAL LABA KOMPREHENSIF PADA TAHUN BERJALAN</b>		<b>962.757.437.164</b>	<b>4909.055.993.057</b>	<b>TOTAL COMPREHENSIVE INCOME FOR THE YEAR</b>
<b>LABA YANG DAPAT DIATRIBUSIKAN KEPADA:</b>				<b>PROFIT ATTRIBUTABLE TO:</b>
Pemilik Entitas Induk		938.142.364.887	3962.838.031.865	Owners of the Parent Entity
Keperwakilan Non-Pengendali	46	90.756.003.004	656.729.673.688	Non-Controlling Interest
<b>LABA TAHUN BERJALAN</b>		<b>1028.898.367.891</b>	<b>4619.567.705.553</b>	<b>PROFIT FOR THE YEAR</b>
<b>JUMLAH LABA KOMPREHENSIF YANG DAPAT DIATRIBUSIKAN KEPADA:</b>				<b>TOTAL COMPREHENSIVE INCOME ATTRIBUTABLE TO:</b>
Pemilik Entitas Induk		872.001.434.160	4252.326.319.369	Owners of the Parent Entity
Keperwakilan Non-Pengendali	46	90.756.003.004	656.729.673.688	Non-Controlling Interest
<b>JUMLAH LABA KOMPREHENSIF PADA TAHUN BERJALAN</b>		<b>962.757.437.164</b>	<b>4909.055.993.057</b>	<b>TOTAL COMPREHENSIVE INCOME FOR THE YEAR</b>
Laba per saham Dasar	47	89,11	291,85	Earnings per share Basic

Lihat catatan atas laporan keuangan konsolidasian yang merupakan bagian yang tidak terpisahkan dari laporan keuangan konsolidasian

See accompanying notes to consolidated financial statements which are an integral part of the consolidated financial statements

**PT WASKITA KARYA (PERSERO) Tbk  
DAN ENTITAS ANAK  
LAPORAN PERUBAHAN EKUITAS KONSOLIDASIAN**  
Untuk Tahun-Tahun yang Berakhir 31 Desember 2019 dan 2018  
(Dalam Rupiah Penuh)

**PT WASKITA KARYA (PERSERO) Tbk  
AND SUBSIDIARIES  
CONSOLIDATED STATEMENTS OF CHANGES IN EQUITY**  
For the Years Ended Then December 31, 2019 and 2018  
(In Full of Rupiah)

Daftar Distribusi kepada Pemilik Entitas Individu/ Attributable to the Owners of the Parent											
Catatan/ Notes	Modal Saham/ Share Capital	Tambahan Modal Diatas/ Additional Paid-in Capital	Saldo labai/ Retained earnings			Komponen Ekuitas Lainnya/ Other Component of Equity			Kepentingan Non-Pengendali/ Non-Controlling Interest	Jumlah Ekuitas/ Total Equity	
			Ditemukan Bekas Ditentukan Pengguguran/ Unappropriated	Bekas Ditentukan Pengguguran/ Unappropriated	Jumlah/ Total	Salah Penjabaran		Jumlah/ Total			
						Laporan Dalam Masa Uang Arah/ Translation Adjustment	Surplus/Revaluasi/ Surplus				
Rp	Rp	Rp	Rp	Rp	Rp	Rp	Rp	Rp	Rp	Rp	
	<b>1.387.394.259.899</b>	<b>5.467.016.482.583</b>	<b>928.538.115.537</b>	<b>5.786.162.991.877</b>	<b>6.881.881.037.614</b>	<b>(7.248.512.843)</b>	<b>588.298.951.793</b>	<b>14.086.438.289.354</b>	<b>87.486.388.520.139</b>	<b>21.754.624.698.495</b>	<b>BALANCE AS OF DECEMBER 31, 2017</b>
Cadangan Umum	38	--	--	(602.558.721.412)	--	--	--	--	--	--	General Reserves
Opsi Saham	--	(660.091.840)	--	--	--	--	--	(660.091.840)	--	668.091.840	Stock Option
Dikawatir Tunai	--	--	--	(778.342.383.868)	(778.342.383.868)	--	--	(778.342.383.868)	--	(778.342.383.868)	Cash Dividend
Kepentingan Non-Pengendali	46	--	--	--	--	--	--	--	1.480.898.491.863	1.480.898.491.863	Non-Controlling Interest
Saldo Penjualan Awal Tahun	--	--	--	--	--	--	--	--	302.948.717.891	302.948.717.891	Revaluation Surplus on Fixed Assets
Laba Tahun Berjalan	--	--	--	3.962.838.031.865	3.962.838.031.865	--	--	3.962.838.031.865	666.726.675.688	4.629.564.707.553	Profit of the Current Year
Penyesuaian atas Perubahan	--	--	--	--	--	--	--	--	--	--	Adjustment for Changes Ownership
Kepentingan Ekuitas Anak	--	15.575.872.194	--	42.038.538.835	42.038.538.835	--	--	(18.292.478.069)	592.327.571.960	574.065.503.866	in Subsidiaries
Pengukuran Kembali Program Imbalan Pasti	--	--	--	2.700.965.459	2.700.965.459	--	--	--	2.700.965.459	2.700.965.459	Remeasurement Defined Benefits Plans - Net
Salah Kurs Penjabaran Laporan Keuangan	--	--	--	--	--	--	--	--	--	--	Exchange Rates Difference on Translation
dan Kegiatan Usaha Luar Negeri	--	--	--	--	--	187.650.154	--	187.650.154	--	187.650.154	of Financial Statements of Foreign Operations
<b>SALDO PER 31 DESEMBER 2018</b>	<b>1.337.390.259.899</b>	<b>5.520.026.362.437</b>	<b>1.583.484.837.348</b>	<b>8.763.989.422.956</b>	<b>10.347.448.269.305</b>	<b>11.388.891.112</b>	<b>131.907.198.524</b>	<b>18.001.116.486.377</b>	<b>10.886.002.686.489</b>	<b>21.233.451.755.867</b>	<b>BALANCE AS OF DECEMBER 31, 2018</b>
Cadangan Umum	38	--	--	(82.899.090.863)	--	--	--	--	--	--	General Reserves
Dikawatir Tunai	--	--	--	(908.789.507.868)	(908.789.507.868)	--	--	(908.789.507.868)	--	(908.789.507.868)	Cash Dividend
Kepentingan Non-Pengendali	46	--	--	--	--	--	--	--	259.002.508.934	259.002.508.934	Non-Controlling Interest
Laba Tahun Berjalan	--	--	--	593.142.364.887	593.142.364.887	--	--	593.142.364.887	907.964.003.004	1.491.106.367.891	Profit of the Current Year
Pengukuran Kembali Program Imbalan Pasti	--	--	--	--	--	--	--	--	--	--	Remeasurement of Defined
Salah Kurs Penjabaran Laporan Keuangan	--	--	--	(61.427.295.899)	(61.427.295.899)	--	--	(61.427.295.899)	--	(61.427.295.899)	Benefits Plans - Net
dan Kegiatan Usaha Luar Negeri	--	--	--	--	--	--	--	--	--	--	Exchange Rates Difference on Translation
	--	--	--	--	--	(6.713.834.828)	--	(6.713.834.828)	--	(6.713.834.828)	of Financial Statements of Foreign Operations



**PT WASKITA KARYA (PERSERO) Tbk  
DAN ENTITAS ANAK  
LAPORAN LABA RUGI DAN  
PENGHASILAN KOMPREHENSIF LAIN  
KONSOLIDASIAN**

Untuk Tahun-Tahun yang Berakhir  
31 Desember 2019 dan 2018  
(Dalam Rupiah Penuh)

**PT WASKITA KARYA (PERSERO) Tbk  
AND SUBSIDIARIES  
CONSOLIDATED STATEMENTS OF  
PROFIT OR LOSS AND  
OTHER COMPREHENSIVE INCOME**

For the Years Then Ended  
December 31, 2019 and 2018  
(In Full of Rupiah)

	Catatan/ Notes	2019	2018	
		Rp	Rp	
Pendapatan Usaha	30, 55	31.387.388.629.869	48.788.990.838.822	Revenues
Beban Pokok Pendapatan	40	(25.782.746.866.464)	(39.926.332.089.924)	Cost of Revenues
<b>LABA BRUTO</b>		<b>5.604.641.763.405</b>	<b>8.862.658.748.898</b>	<b>GROSS PROFIT</b>
Beban Penjualan	41	(5.1589.935.546)	(5.205.890.476)	Selling Expenses
Beban Umum dan Administrasi	41	(1.319957.348.117)	(1.616.540.079.059)	General and Administrative Expenses
Beban Pajak Final	11	(706417.381.314)	(1.489.515.370.042)	Final Tax Expenses
Pendapatan Bunga		957.884.130.420	648.047.194.568	Interest Income
Kuntungan (Kerugian) Selisih Kurs - Bersih		(12551.246.681)	11.863.388.237	Gain (Loss) on Foreign Exchange Rates - Net
Pendapatan Lain-lain	42	965.263.113.888	2025.108.357.243	Other Income
Beban Lain-lain	43	(197802.480.370)	(#23.475.576.187)	Other Expenses
<b>LABA SEBELUM BEBAN KEUANGAN, BAGIAN LABA BERSIH ENTITAS ASOSIASI DAN VENTURA BERSAMA</b>		<b>5239.471.615.685</b>	<b>7966.901.773.182</b>	<b>PROFIT BEFORE FINANCIAL CHARGES, EQUITY IN NET INCOME OF ASSOCIATES AND JOINT VENTURES</b>
Beban Keuangan	44	(3.620533.969.507)	(2.459.241.670.378)	Financial Charges
Bagian Laba (Rugi) Bersih Entitas Asosiasi dan Ventura Bersama	45	(290287.684.339)	28.782.401.204	Equity & Net Income (Loss) of Associates and Joint Ventures
<b>LABA SEBELUM PAJAK</b>		<b>1328.649.961.839</b>	<b>5536.442.504.008</b>	<b>PROFIT BEFORE TAX</b>
Beban Pajak Penghasilan	11	(299751.593.948)	(#16.874.798.455)	Income Tax Expenses
<b>LABA TAHUN BERJALAN</b>		<b>1028.898.367.891</b>	<b>4619.567.705.553</b>	<b>PROFIT FOR THE YEAR</b>
<b>PENGHASILAN KOMPREHENSIF LAIN</b>				<b>OTHER COMPREHENSIVE INCOME</b>
Pos-pos yang Tidak Akan Direklasifikasi Kemudian ke Laba Rugi				Items that Will Not Be Reclassified Subsequently to Profit and Loss
Surplus Revaluasi Aset Tetap Pengukuran Kembali Program Imbalan Pasti - Bersih		-	342.948.717.891	Revaluation Surplus on Fixed Assets Remeasurement of Defined Benefit Obligations - Net
Pos-pos yang Akan Direklasifikasi Kemudian ke Laba Rugi				Items that Will Be Reclassified Subsequently to Profit and Loss
Selisih Kurs Perjabaran Laporan Keuangan dari Kegiatan Operasi Luar Negeri		(4713.634.828)	18.748.604.154	Exchange Difference on Translation of Financial Statements in Foreign Operational
Penghasilan (Beban) Komprehensif Lain Tahun Berjalan		(66140.930.727)	289.488.287.504	Total Other Comprehensive Income (Expenses) For The Year
<b>TOTAL LABA KOMPREHENSIF PADA TAHUN BERJALAN</b>		<b>962.757.437.164</b>	<b>4909.055.993.057</b>	<b>TOTAL COMPREHENSIVE INCOME FOR THE YEAR</b>
<b>LABA YANG DAPAT DIATRIBUSIKAN KEPADA:</b>				<b>PROFIT ATTRIBUTABLE TO:</b>
Pemilik Entitas Induk		938.142.364.887	3962.838.031.865	Owners of the Parent Entity
Keperwakilan Non-Pengendali	46	90.756.003.004	656.729.673.688	Non-Controlling Interest
<b>LABA TAHUN BERJALAN</b>		<b>1028.898.367.891</b>	<b>4619.567.705.553</b>	<b>PROFIT FOR THE YEAR</b>
<b>JUMLAH LABA KOMPREHENSIF YANG DAPAT DIATRIBUSIKAN KEPADA:</b>				<b>TOTAL COMPREHENSIVE INCOME ATTRIBUTABLE TO:</b>
Pemilik Entitas Induk		872.001.434.160	4252.326.319.369	Owners of the Parent Entity
Keperwakilan Non-Pengendali	46	90.756.003.004	656.729.673.688	Non-Controlling Interest
<b>JUMLAH LABA KOMPREHENSIF PADA TAHUN BERJALAN</b>		<b>962.757.437.164</b>	<b>4909.055.993.057</b>	<b>TOTAL COMPREHENSIVE INCOME FOR THE YEAR</b>
Laba per saham Dasar	47	89,11	291,85	Earnings per share Basic

Lihat catatan atas laporan keuangan konsolidasian yang merupakan bagian yang tidak terpisahkan dari laporan keuangan konsolidasian

See accompanying notes to consolidated financial statements which are an integral part of the consolidated financial statements

**PT WASKITA KARYA (PERSERO) Tbk  
DAN ENTITAS ANAK  
LAPORAN LABA RUGI DAN  
PENGHASILAN KOMPREHENSIF LAIN  
KONSOLIDASIAN**  
Untuk Tahun-Tahun yang Berakhir  
31 Desember 2020 dan 2019  
(Dalam Rupiah Penuh)

**PT WASKITA KARYA (PERSERO) Tbk  
AND SUBSIDIARIES  
CONSOLIDATED STATEMENTS OF  
PROFIT OR LOSS AND  
OTHER COMPREHENSIVE INCOME**  
For the Years Then Ended  
December 31, 2020 and 2019  
(In Full of Rupiah)

	Catatan/ Notes	2020	2019	
		Rp	Rp	
Pendapatan Usaha	41, 56	₹ 190.456.515.103	31.387.389.629.869	Revenues
Beban Pokok Pendapatan	42	(₹ 18.168.339.421.735)	(₹ 5.782.746.866.464)	Cost of Revenues
<b>LABA (RUGI) BRUTO</b>		<b>(₹ 977.882.906.632)</b>	<b>5.604.642.763.405</b>	<b>GROSS PROFIT (LOSS)</b>
Beban Penjualan	43	(45.904.808.574)	(₹ 1.589.935.546)	Selling Expenses
Beban Umum dan Administrasi	43	(₹ 656.332.903.229)	(₹ 1.319.957.348.117)	General and Administrative Expenses
Beban Pajak Final	11	(₹ 57.036.198.688)	(708.417.381.314)	Final Tax Expenses
Pendapatan Bunga		750.125.330.133	957.884.130.420	Interest Income
Keugian Selisih Kurs - Berah		(2.604.955.797)	(12.551.246.681)	Loss on Foreign Exchange Rates - Net
Pendapatan Lain - lain	44	334.724.579.707	965.263.113.888	Other Income
Beban Lain-lain	45	(₹ 384.447.069.286)	(197.802.480.370)	Other Expenses
<b>LABA (RUGI) SEBELUM BEBAN KEUANGAN, BAGIAN LABA BERSIH ENTITAS ASOSIASI DAN VENTURA BERSAMA</b>		<b>(₹ 338.358.932.366)</b>	<b>5.239.471.815.885</b>	<b>PROFIT (LOSS) BEFORE FINANCIAL CHARGES, EQUITY IN NET INCOME OF ASSOCIATES AND JOINT VENTURES</b>
Beban Keuangan	46	(₹ 741.217.297.950)	(₹ 620.533.969.507)	Financial Charges
Bagian Rugi Berah				Equity & Net Loss
Entitas Asosiasi dan Ventura Bersama	47	₹ 648.845.699.537)	(290.287.684.339)	of Associates and Joint Ventures
<b>LABA (RUGI) SEBELUM PAJAK</b>		<b>(₹ 728.421.929.853)</b>	<b>1.328.649.961.839</b>	<b>PROFIT (LOSS) BEFORE TAX</b>
Morfaat (Beban) Pajak Penghasilan	11	233.695.783.307	(299.751.593.948)	Income Tax Benefit (Expenses)
<b>LABA (RUGI) TAHUN BERJALAN</b>		<b>(₹ 495.726.146.546)</b>	<b>1.028.898.367.891</b>	<b>PROFIT (LOSS) FOR THE YEAR</b>
<b>PENGHASILAN KOMPREHENSIF LAIN</b>				<b>OTHER COMPREHENSIVE INCOME</b>
Pos-pos yang Tidak Akan Direklasifikasi Kemudian ke Laba Rugi				Items that Will Not Be Reclassified to Profit and Loss
Pengukuran Kembali Program Imbalan Pasti - Berah		91.597.165.158	(₹ 1.427.295.899)	Remeasurement of Defined Benefit Obligations - Net
Pos-pos yang Akan Direklasifikasi Kemudian ke Laba Rugi				Items that May Be Reclassified Subsequently to Profit and Loss
Selisik Kurs Perjabaran laporan Keuangan dari Kegiatan Operas Luar Negeri		(₹ 103.023.617)	(₹ 713.634.828)	Exchange Difference on Translation of Financial Statements in Foreign Operational
Penghasilan (Beban) Komprehensif Lain Tahun Berjalan		91.494.141.541	(₹ 1.140.930.727)	Total Other Comprehensive Income (Expenses) For The Year
<b>TOTAL LABA (RUGI) KOMPREHENSIF PADA TAHUN BERJALAN</b>		<b>(₹ 401.232.005.005)</b>	<b>962.757.437.164</b>	<b>TOTAL COMPREHENSIVE INCOME (LOSS) FOR THE YEAR</b>
<b>LABA (RUGI) YANG DAPAT DIATRIBUSIKAN KEPADA:</b>				<b>PROFIT (LOSS) ATTRIBUTABLE TO:</b>
Pemilik Entitas Induk		(₹ 378.553.582.119)	938.142.354.887	Owners of the Parent Entity
Kepentingan Non-Pengendali	48	(₹ 117.172.564.427)	90.756.003.004	Non-Controlling Interest
<b>LABA (RUGI) TAHUN BERJALAN</b>		<b>(₹ 495.726.146.546)</b>	<b>1.028.898.367.891</b>	<b>PROFIT (LOSS) FOR THE YEAR</b>
<b>JUMLAH LABA (RUGI) KOMPREHENSIF YANG DAPAT DIATRIBUSIKAN KEPADA:</b>				<b>TOTAL COMPREHENSIVE INCOME (LOSS) ATTRIBUTABLE TO:</b>
Pemilik Entitas Induk		(₹ 284.059.410.578)	872.001.634.160	Owners of the Parent Entity
Kepentingan Non-Pengendali	48	(₹ 117.172.564.427)	90.756.003.004	Non-Controlling Interest
<b>JUMLAH LABA (RUGI) KOMPREHENSIF PADA TAHUN BERJALAN</b>		<b>(₹ 401.232.005.005)</b>	<b>962.757.437.164</b>	<b>TOTAL COMPREHENSIVE INCOME (LOSS) FOR THE YEAR</b>
Laba (Rugi) per saham Dasar	49	₹ 43,581	₹ 11	Earnings (Loss) per share Basic

Lihat catatan atas laporan keuangan konsolidasian yang merupakan bagian yang tidak terpisahkan dari laporan keuangan konsolidasian

See accompanying notes to consolidated financial statements which are an integral part of the consolidated financial statements

PT WASKITA KARYA (PERSERO) Tbk  
 DAN ENTITAS ANAK  
 LAPORAN PERUBAHAN EKUITAS KONSOLIDASIAN  
 Untuk Tahun-Tahun yang Berakhir 31 Desember 2020 dan 2019  
 (Dalam Rupiah Penuh)

PT WASKITA KARYA (PERSERO) Tbk  
 AND SUBSIDIARIES  
 CONSOLIDATED STATEMENTS OF CHANGES IN EQUITY  
 For the Years Ended Then December 31, 2020 and 2019  
 (In Full of Rupiah)

Catatan/ Notes	Detail Perubahan/Laporan Pemilik, Entitas Anak/Atributable to the Owners of the Agent											BALANCE AS OF DECEMBER 31, 2019	
	Tambahkan/Mendapat		Saldo Awal/Revised/Beginning				Komponen Ekuitas Lainnya/ Other Component of Equity			Keperluan Non-Controlling Interest			Jumlah/Disukai/ Total Equity
	Modal Saham/ Share Capital	Saldo Awal/ Additional Paid-in Capital	Saluran Penggunaan/ Appropriated	Dikembalikan/ Penggunaan/ Unappropriated	Jumlah/ Total	Saldo/Perubahan Laporan Laba Rugi/Profit Transfer Adjustment	Saldo/Perubahan Reservasi Surplus	Jumlah/ Total	Rp	Rp			
SAKDO PER 31 DESEMBER 2019	1357.386.258.896	555.220.362.437	1.583.494.827.246	8.793.969.422.056	10.947.404.260.305	11.388.482.112	732.967.196.524	18.081.114.805.377	10.889.002.485.480		28.887.118.750.887		
Dedangkan Umum	40	-	-	888.690.803	88.889.000.803	-	-	-	-	-	General Reserve		
Dedahan Tunas	-	-	-	-	(600.709.607.964)	-	-	-	(600.709.607.964)	-	Share Dividend		
Keperluan Non-Perpendiri	48	-	-	-	-	-	-	259.001.508.594	259.001.508.594	-	Non-Controlling Interest		
Surplus/Reservasi/Keuntungan Laba Tahun Berjalan	-	-	-	-	-	-	-	-	-	-	Retained Earnings/Profit After Current Year		
Pengukuran Kembali/Pengaruh Inflasi/Pasif Bersih	-	-	-	1.081.423.644.887	1.081.423.644.887	-	-	88.142.364.887	907.956.003.004	-	Reassessment of Deferred Share Price - Net		
Saldo/Kurs Pengukuran Laporan Keuangan dari Negara/Entitas Lain/Region	-	-	-	-	-	-	-	(61.427.296.699)	-	(61.427.296.699)	Exchange Rate Difference on Translation of Financial Statements in Foreign Operations		
SAKDO PER 31 DESEMBER 2019	1357.386.258.896	555.220.362.437	1.583.494.827.246	8.882.393.066.943	10.936.704.658.943	6.874.487.924	732.967.196.524	17.962.487.891.371	11.236.681.187.428		28.887.118.750.887		
Dampak Perincian PSAK 71, 72, dan 73 - Bersih Saldo, 1 Januari 2020	40, 61	-	-	-	(1.255.992.152.800)	(1.255.992.152.800)	-	-	(1.255.992.152.800)	-	(1.255.992.152.800)	Impact of Implementation of PSAK 71, 72, and 73 - Net Balance, January 1, 2020	
Saldo/Keperluan Perincian PSAK 71, 72, dan 73	1357.386.258.896	555.220.362.437	1.583.494.827.246	8.366.300.914.143	9.680.712.506.143	6.874.487.924	732.967.196.524	16.706.495.738.571	11.236.681.187.428		28.887.118.750.887		
Dedangkan Umum	40	-	-	597.074.690.000	59.707.469.000	-	-	-	-	-	General Reserve		
Dedahan Tunas	-	-	-	-	(49.907.902.471)	-	-	-	(49.907.902.471)	-	Share Dividend		
Keperluan Non-Perpendiri	48	-	-	-	-	-	-	(71.507.276.041)	(71.507.276.041)	-	Non-Controlling Interest		
Pajak/Pendapatan/Overhead	4.840.000	-	-	-	-	-	-	-	4.840.000	-	The Expense of Stock Options		
Surplus/Reservasi/Keuntungan Laba Tahun Berjalan	-	-	-	-	-	-	-	-	-	-	Retained Earnings/Profit After Current Year		
Pengukuran Kembali/Pengaruh Inflasi/Pasif Bersih	-	-	-	(7.378.933.862.119)	(7.378.933.862.119)	-	-	(7.378.933.862.119)	(7.378.933.862.119)	-	Reassessment of Deferred Share Price - Net		
Saldo/Kurs Pengukuran Laporan Keuangan dari Negara/Entitas Lain/Region	-	-	-	7923.172.505	7923.172.505	-	-	(94.582.204)	305.233.600.715	(6.068.194.729)	305.139.408.586		
SAKDO PER 31 DESEMBER 2020	1357.386.258.896	549.531.320.847	1.732.918.148.093	6.172.221.648.820	8.401.120.243.584	6.271.432.667	732.967.196.524	10.224.141.603.053	9.645.931.162.227		28.887.118.750.887		

**PT WASKITA KARYA (PERSERO) Tbk  
DAN ENTITAS ANAK  
LAPORAN ARUS KAS  
KONSOLIDASIAN**

Untuk Tahun-Tahun yang Berakhir  
31 Desember 2020 dan 2019  
(Dalam Rupiah Penuh)

**PT WASKITA KARYA (PERSERO) Tbk  
AND SUBSIDIARIES  
CONSOLIDATED STATEMENTS  
OF CASH FLOWS**

For the Years Then Ended  
December 31, 2020 and 2019  
(In Full of Rupiah)

	Catatan/ Notes	2020 Rp	2019 Rp	
<b>ARUS KAS DARI AKTIVITAS OPERASI</b>				<b>CASH FLOWS FROM OPERATING ACTIVITIES</b>
Penerimaan Kas dari Pelanggan		20.389.484.316.405	53.622.470.304.152	Cash Receipts from Customers
Pengeluaran Kas kepada Pemasok		(18.538.392.799.234)	(9.812.397.638.626)	Cash Paid to Suppliers
Pengeluaran Kas kepada Karyawan dan Direksi		(1.005.254.579.798)	(786.179.050.513)	Cash Paid to Employees and Directors
Kas Dikasikan dari Operasi		3.845.836.937.373	13.023.893.615.013	Cash Generated from Operations
Pembayaran Beban Keuangan		(4.248.301.822.137)	(1.823.812.200.163)	Payment for Finance Charges
Penerimaan Restitusi Pajak		1.032.008.767.009	314.415.395.994	Receipt of Tax Refunds
Pembayaran Pajak		(218.460.237.643)	(2.500.267.370.782)	Payment of Taxes
<b>Kas Bersih Diperoleh dari Aktivitas Operasi</b>		<b>411.961.644.702</b>	<b>18.042.49.440.962</b>	<b>Net Cash Provided by Operating Activities</b>
<b>ARUS KAS DARI AKTIVITAS INVESTASI</b>				<b>CASH FLOWS FROM INVESTING ACTIVITIES</b>
Penerimaan dari Ventura Bersama		3.599.091.183.581	915.690.664.958	Receipt from Joint Ventures
Penempatan pada Ventura Bersama		(679.421.911.703)	(2.860.216.608.022)	Placement of Joint Ventures
Penempatan Deposito		-	(1.162.554.727.785)	Placement of Time Deposits
Penerimaan Pencairan Deposito		2.303.340.274.735	209.400.000.000	Receipt from Time Deposits
Pemecahan Asef tetap		(905.056.015.353)	(2.742.933.919.138)	Acquisition of Fixed Assets
Pertambahan Properti Investasi		-	(838.66.984.995)	Additional Investment Properties
Pemecahan Asef tidak berwujud		(5.913.759.055.644)	(1.963.159.274.305)	Acquisition of Intangible Assets
Penempatan Investasi jangka Pendek		(230.560.425.391)	-	Placement of Short-Term Investments
Penempatan Investasi pada Entitas Asosiasi dan Jangka Panjang Lainnya		(1.043.986.936.342)	(1.597.873.534.941)	Placement of Investment in Associates and Long-Term Investments
Penerimaan atas Pelepasan Penyertaan Pada Entitas Anak dan Entitas Asosiasi		500.000.000.000	1.657.200.000.000	Receipt from Disposal of Investment in Subsidiaries and Associates
Penerimaan atas Pengembalian Pinjaman dari Entitas Asosiasi Pinjaman Dibelian kepada Entitas Asosiasi		1.324.275.009.702	-	Receipt from Loans Repayment from Associates Loans to Associates
<b>Kas Bersih Digunakan untuk Aktivitas Investasi</b>		<b>(1.056.897.478.415)</b>	<b>(14.924.743.305.937)</b>	<b>Net Cash Used in Investing Activities</b>
<b>ARUS KAS DARI AKTIVITAS PENDANAAN</b>				<b>CASH FLOWS FROM FINANCING ACTIVITIES</b>
Penjualan Utang Obligasi	52	(3.266.000.000.000)	(2.000.000.000.000)	Payment of Bonds Payable
Penerimaan Penerbitan Obligasi	52	355.000.000.000	384.750.000.000	Receipt from Bonds Issuance
Pembayaran Biaya Obligasi	52	-	(426.224.739.202)	Bonds Issuance Costs
Penerimaan Rekening Giro dan Deposito Berjangka		761.25.330.133	999.702.739.827	Interest Income from Current Account and Time Deposit
Pembayaran Beban Keuangan		(2.294.045.452.019)	(3.642.809.954.485)	Payment for Finance Charges
Penerimaan Pinjaman Bank	52	6.079.907.484.498	11.597.843.065.552	Receipt from Bank Loans
Pembayaran Pinjaman Bank	52	(48.163.241.580.359)	(66.874.491.736.591)	Payment of Bank Loans
Penerimaan Pinjaman Lembaga Keuangan Non-Bank	52	1.099.855.241.147	1292.187.578.508	Receipt from Financial Institution Non-Bank
Pembayaran Pinjaman Lembaga Keuangan Non-Bank	52	(1.480.412.638.6)	-	Payment to Financial Institution Non-Bank
Penerimaan Surat Utang Jangka Menengah	52	-	700.000.000.000	Receipt from Medium Term Notes
Pembayaran Surat Utang Jangka Menengah	52	(770.998.055.556)	(792.07.690.987)	Payment to Medium Term Notes
Penerimaan Uang Laba Laba dan Pemegang Saham Non-Pengendali		276.557.438.875	-	Receipt of Other Payables from Non-controlling Shareholders
Pembayaran Dividen Tunai		(6.907.902.471)	(9.907.097.450.83)	Payment of Cash Dividend
Pembayaran Liabilitas Sewa		(9.512.542.804)	-	Payment of Lease Liabilities
Pengeluaran ke Entitas Non-Pengendali		(7.1507.276.640)	-	Paid to Non-controlling Interest
Penerimaan Setoran dari Entitas Non-Pengendali		-	359.302.508.934	Receipt from Non-controlling Interest
<b>Kas Bersih Diperoleh/di (Digunakan untuk) Aktivitas Pendanaan</b>		<b>(7.407.971.940.982)</b>	<b>4334.944.286.473</b>	<b>Net Cash Provided by (Used in) Financing Activities</b>
<b>PENURUNAN BERSIH KAS DAN SETARA KAS</b>				<b>NET DECREASE IN CASH AND CASH EQUIVALENTS</b>
		(8.052.086.872.695)	(1.5755.49.579.402)	
<b>KEUNTUNGAN (KERUGIAN) SELISIH KURS YANG BELUM DIREALISASI</b>				<b>UNREALIZED GAIN (LOSS) ON FOREIGN EXCHANGE RATE</b>
		7.241.152.852	(118.18.609.407)	
<b>PENGARUH PELEPASAN ENTITAS ANAK PADA KAS DAN SETARA KAS</b>				<b>EFFECT ON DISPOSAL OF SUBSIDIARIES ON CASH AND CASH EQUIVALENTS</b>
		(0.026.930.683)	-	
<b>KAS DAN SETARA KAS PADA AWAL TAHUN</b>				<b>CASH AND CASH EQUIVALENTS AT THE BEGINNING OF YEAR</b>
		928.310.038.392	1.845.678.217.201	
<b>KAS DAN SETARA KAS PADA AKHIR TAHUN</b>				<b>CASH AND CASH EQUIVALENTS AT THE END OF YEAR</b>
		1.213.437.171.866	9.258.130.028.392	

Rekonsiliasi liabilitas yang timbul dari aktivitas pendanaan  
(Catatan 52)

Reconciliation of liabilities arising from financing activities  
(Note 52)

Lihat catatan atas laporan keuangan konsolidasian yang  
merupakan bagian yang tidak terpisahkan dari  
laporan Keuangan konsolidasian

See accompanying notes to consolidated financial  
statements which are an integral part of  
the consolidated financial statements

**PT WASKITA KARYA (PERSERO) Tbk  
DAN ENTITAS ANAK  
LAPORAN LABA RUGI DAN  
PENGHASILAN KOMPREHENSIF LAIN  
KONSOLIDASIAN**

Untuk Tahun-tahun yang Berakhir  
31 Desember 2021 dan 2020  
(Dalam Rupiah Penuh)

**PT WASKITA KARYA (PERSERO) Tbk  
AND ITS SUBSIDIARIES  
CONSOLIDATED STATEMENTS OF  
PROFIT OR LOSS AND  
OTHER COMPREHENSIVE INCOME**

For the Years Ended  
December 31, 2021 dan 2020  
(In Full of Rupiah)

	Catatan/ Notes	2021	2020 <sup>*)</sup>	
		Rp	Rp	
Pendapatan Usaha	41, 55	12.224.128.315.553	11.190.456.515.103	Revenues
Beban Pokok Pendapatan	42	(10.325.642.190.087)	(15.136.023.660.455)	Cost of Revenues
<b>LABA BRUTO</b>		<b>1.898.486.125.466</b>	<b>1.054.432.854.648</b>	<b>GROSS PROFIT</b>
Beban Penjualan	43	(16.481.305.094)	(89.921.044.656)	Selling Expenses
Beban Umum dan Administrasi	43	(2.258.676.431.599)	(1.334.417.918.832)	General and Administrative Expenses
Beban Pajak Final	11	(40.314.834.015)	(57.036.198.688)	Final Tax Expenses
Pendapatan Bunga		985.757.639.509	750.125.330.133	Interest Income
Kuntungan (Kerugian) Selisih Kurs - Bersih		682.025.553	(2.604.955.797)	Gain (Loss) on Foreign Exchange Rates - Net
Pendapatan (Beban) Lain - lain - Bersih	44	3736.078.859.116	(219.305.277.471)	Other Income (Expense) - Net
<b>LABA (RUGI) SEBELUM BEBAN KEUANGAN, BAGIAN LABA BERSIH ENTITAS ASOSIASI DAN VENTURA BERSAMA</b>		<b>4075.569.078.936</b>	<b>(3.498.727.210.663)</b>	<b>PROFIT (LOSS) BEFORE FINANCIAL CHARGES, EQUITY IN NET INCOME OF ASSOCIATES AND JOINT VENTURES</b>
Beban Keuangan	45	(1.840.185.769.843)	(1.877.332.458.300)	Financial Charges
Bagian Rugi Bersih Entitas Asosiasi dan Ventura Bersama	46	(221.624.042.892)	(648.845.699.537)	Equity in Net Loss of Associates and Joint Ventures
<b>RUGI SEBELUM PAJAK</b>		<b>(1.086.240.733.799)</b>	<b>(3.024.965.368.500)</b>	<b>LOSS BEFORE TAX</b>
Beban Pajak Penghasilan	11	(752.492.708.176)	(662.887.829.312)	Income Tax Expenses
<b>RUGI TAHUN BERJALAN</b>		<b>(1.838.733.441.975)</b>	<b>(3.287.793.197.812)</b>	<b>LOSS FOR THE YEAR</b>
<b>PENGHASILAN KOMPREHENSIF LAIN</b>				<b>OTHER COMPREHENSIVE INCOME</b>
Pos-pos yang Tidak Akan Direklasifikasi Kemudian ke Laba Rugi				Items that Will Not Be Reclassified to Profit and Loss
Surplus (Defisit) Revaluasi Aset Tetap Pengukuran Kembali Program Ibtalasi Pasti - Bersih		79.249.332.811	(68.445.793.356)	Revaluation Surplus (Deficit) on Fixed Assets Remeasurement of Defined Benefit Obligations - Net
Pos-pos yang Akan Direklasifikasi Kemudian ke Laba Rugi				Items that May Be Reclassified Subsequently to Profit and Loss
Selisih Kurs Penjabaran Laporan Keuangan dari Kegiatan Operasi Luar Negeri		33.609.486	(103.023.611)	Exchange Difference on Translation of Financial Statements in Foreign Operational
Penghasilan Komprehensif Lain Tahun Berjalan		120.583.298.912	26.048.348.191	Total Other Comprehensive Income For The Year
<b>TOTAL RUGI KOMPREHENSIF PADA TAHUN BERJALAN</b>		<b>(1.718.150.143.063)</b>	<b>(3.261.744.849.621)</b>	<b>TOTAL COMPREHENSIVE LOSS FOR THE YEAR</b>
<b>RUGI YANG DAPAT DIATRIBUSIKAN KEPADA:</b>				<b>LOSS ATTRIBUTABLE TO:</b>
Pemilik Entitas Induk Kepentingan Non-Pengendali	47	(1.096.212.049.912)	(7.359.679.861.100)	Owners of the Parent Entity Non-Controlling Interest
<b>RUGI TAHUN BERJALAN</b>		<b>(1.838.733.441.975)</b>	<b>(3.287.793.197.812)</b>	<b>LOSS FOR THE YEAR</b>
<b>JUMLAH RUGI KOMPREHENSIF YANG DAPAT DIATRIBUSIKAN KEPADA:</b>				<b>TOTAL COMPREHENSIVE LOSS ATTRIBUTABLE TO:</b>
Pemilik Entitas Induk Kepentingan Non-Pengendali	47	(975.628.751.000)	(7.333.631.512.909)	Owners of the Parent Entity Non-Controlling Interest
<b>JUMLAH RUGI KOMPREHENSIF PADA TAHUN BERJALAN</b>		<b>(1.718.150.143.063)</b>	<b>(3.261.744.849.621)</b>	<b>TOTAL COMPREHENSIVE LOSS FOR THE YEAR</b>
Rugi per saham Dasar	48	(1,66)	(542,19)	Loss per share Basic

<sup>\*)</sup> Disajikan kembali pada Catatan 61

<sup>\*)</sup> As restated in Note 61

Lihat catatan atas laporan keuangan konsolidasian yang merupakan bagian yang tidak terpisahkan dari laporan keuangan konsolidasian

See accompanying notes to consolidated financial statements which are an integral part of the consolidated financial statements

**PT WASKITA KARYA (PERSERO) Tbk  
DAN ENTITAS ANAK  
LAPORAN PERUBAHAN EKUITAS KONSOLIDASIAN**  
Untuk Tahun-tahun yang Berakhir 31 Desember 2021, 2020 dan 2019  
(Dalam Rupiah Penuh)

**PT WASKITA KARYA (PERSERO) Tbk  
AND ITS SUBSIDIARIES  
CONSOLIDATED STATEMENTS OF CHANGES IN EQUITY**  
For the Years Ended December 31, 2021, 2020 and 2019  
(In Full of Rupiah)

Daftar Distribusi Laporan Keuangan Ekuitas Attributable to the Owners of the Parent													
Catatan/Notes	Transaksi Modal			Saldo Awal/Retained Earnings			Koreksi Saldo Awal/Other Components of Equity			Keuntungan/Non-Penghasilan		Lainnya/Other	
	Modal Saham/Share Capital	Saldo Awal/Retained Earnings	Saldo Akhir/Retained Earnings	Saldo Awal/Retained Earnings	Saldo Akhir/Retained Earnings	Saldo Akhir/Retained Earnings	Saldo Awal/Retained Earnings	Saldo Akhir/Retained Earnings	Saldo Awal/Retained Earnings	Saldo Akhir/Retained Earnings	Saldo Awal/Retained Earnings	Saldo Akhir/Retained Earnings	
<b>SALDO PER 31 DESEMBER 2019</b>													
	157,381,203,889	1,833,828,281,437	1,833,828,281,437	1,792,958,432,826	9,337,458,289,305	9,337,458,289,305	9,337,458,289,305	723,987,290,513	9,337,458,289,305	9,337,458,289,305	9,337,458,289,305	9,337,458,289,305	
<b>SALDO AWAL PERSEKUTUAN</b>													
	--	--	--	(2,112,922,827,711)	(3,112,922,827,711)	(3,112,922,827,711)	--	7,468,824,464	(2,285,286,193,257)	(262,828,438,248)	(1,833,828,281,437)	--	
<b>SALDO AWAL PERSEKUTUAN PER 1 JANUARI 2019</b>													
	157,381,203,889	1,833,828,281,437	1,833,828,281,437	1,681,035,605,115	9,014,615,431,594	9,014,615,431,594	9,014,615,431,594	786,371,820,888	9,014,615,431,594	9,014,615,431,594	9,014,615,431,594	9,014,615,431,594	
<b>SALDO PER 31 DESEMBER 2019 / 1 JANUARI 2020</b>													
	157,381,203,889	1,833,828,281,437	1,833,828,281,437	1,681,035,605,115	9,014,615,431,594	9,014,615,431,594	9,014,615,431,594	786,371,820,888	9,014,615,431,594	9,014,615,431,594	9,014,615,431,594	9,014,615,431,594	
<b>SALDO AWAL PERSEKUTUAN PER 1 JANUARI 2020</b>													
	157,381,203,889	1,833,828,281,437	1,833,828,281,437	1,681,035,605,115	9,014,615,431,594	9,014,615,431,594	9,014,615,431,594	786,371,820,888	9,014,615,431,594	9,014,615,431,594	9,014,615,431,594	9,014,615,431,594	
<b>SALDO PER 31 DESEMBER 2020 / 1 JANUARI 2021</b>													
	157,381,203,889	1,833,828,281,437	1,833,828,281,437	1,681,035,605,115	9,014,615,431,594	9,014,615,431,594	9,014,615,431,594	786,371,820,888	9,014,615,431,594	9,014,615,431,594	9,014,615,431,594	9,014,615,431,594	

Lihat catatan atas laporan keuangan konsolidasian yang merupakan bagian yang tidak terpisahkan dari laporan keuangan konsolidasian

See accompanying notes to consolidated financial statements which are an integral part of the consolidated financial statements

**PT WASKITA KARYA (PERSERO) Tbk  
DAN ENTITAS ANAK  
LAPORAN ARUS KAS  
KONSOLIDASIAN**

Untuk Tahun-tahun yang Berakhir  
31 Desember 2021 dan 2020  
(Dalam Rupiah Penuh)

**PT WASKITA KARYA (PERSERO) Tbk  
AND ITS SUBSIDIARIES  
CONSOLIDATED STATEMENTS  
OF CASH FLOWS**

For the Years Ended  
December 31, 2021 dan 2020  
(In Full of Rupiah)

	Catatan/ Notes	2021	2020	
		Rp	Rp	
<b>ARUS KAS DARI AKTIVITAS OPERASIONAL</b>				<b>CASH FLOWS FROM OPERATING ACTIVITIES</b>
Perolehan Kas dari Pelanggan		17524600623.281	23.180.464.316.465	Cash Receipts from Customers
Pengeluaran Kas kepada Pemakai		(2.375544.080917)	(18.538.392799.234)	Cash Paid to Suppliers
Pengeluaran Kas kepada Karyawan dan Direksi		4.38104.111695)	(1.025.254579.799)	Cash Paid to Employees and Directors
Kas Dihasilkan dari Operasi		4711046830.999	3445.816937.313	Cash Generated from Operations
Pembayaran Beban Keuangan		(1.507941.855213)	(1.248.301427.137)	Payment for Financial Charges
Perolehan Restitusi Pajak	11	23599640.682	1632.006767.069	Receipt from Tax Refundations
Pembayaran Pajak		(4439483794.1)	(215.460237.543)	Payment for Taxes
Kas Bersih Diperoleh dari Aktivitas Operasi		19278.236617	41.981.644702	Net Cash Provided by Operating Activities
<b>ARUS KAS DARI AKTIVITAS INVESTASI</b>				<b>CASH FLOWS FROM INVESTING ACTIVITIES</b>
Perolehan dan Ventura Bersama		283491.703.812	3589.091183.581	Receipt from Joint Ventures
Penempatan pada Ventura Bersama		(3.33118079244)	(679.421911.004)	Placement of Joint Ventures
Penempatan Deposito	3	(6.359616608448)	--	Placement of Time Deposits
Perolehan Deposito	3	--	2103.340274.715	Receipt from Time Deposits
Perolehan Kas Tetap		(4.4768029510)	(205.056615.353)	Acquisition of Fixed Assets
Perolehan atas Pengembalian Pinjaman dari Entitas Asosiasi		152273.195.203	1124.275009.702	Receipt of Loans Repayments from Associates
Perolehan Investasi Jangka Pendek		23125.403.898	--	Placement of Short Term Investments
Perolehan Kas Taberwujud		(297666599351)	(6.943.759055.644)	Acquisition of Intangible Assets
Penempatan Investasi Jangka Pendek		--	(20.560425.381)	Placement of Short Term Investments
Penempatan Investasi pada Entitas Asosiasi dan Jangka Panjang Lainnya		(9428.000000)	(1.043.985936.342)	Placement of Investment in Associates and Long-Term Investments
Perolehan atas Pelaporan Penyerahan Pada Entitas Anak dan Entitas Asosiasi		5352841.253.659	590.000.000.000	Receipt from Disposal of investment in Subsidiaries and Associates
Kas Bersih Digunakan untuk Aktivitas Investasi		(1542246.886613)	(8.566977.476.415)	Net Cash Used in Investing Activities
<b>ARUS KAS DARI AKTIVITAS PENDANAAN</b>				<b>CASH FLOWS FROM FINANCING ACTIVITIES</b>
Pelissan Bunga Obligasi	51	(2.336006000000)	(3.285.000000.000)	Payment of Bonds Payable
Perolehan Rekening Giro dan Deposito Berjangka		927145696.806	760.124.330.113	Interest Income from Current Account and Time Deposit
Pembayaran Beban Keuangan		(54854051794)	(2.295.045452.012)	Payment for Financial Charges
Pembayaran Emisi Obligasi		(7318750000)	--	Bonds Issuance Costs
Perolehan Penerbitan Obligasi		1773000000.000	135.500.000.000	Receipt from Bonds Issuance
Perolehan Pinjaman Bank	51	58334246971.412	4519.901484.488	Receipt from Bank Loans
Pembayaran Pinjaman Bank	51	(63.148541386211)	(48.163.241680.363)	Payment of Bank Loans
Perolehan Tambahan Setoran Modal	51	7899999994.500	--	Receipt from Paid up Capital
Pembayaran Utang Tunai	51	--	(46.907502.471)	Payment of Cash Liabilities
Perolehan Pinjaman Lembaga Keuangan Non-Bank	51	791688590.635	1689.855241.117	Receipt from Financial Institutions/Non Bank
Pembayaran Pinjaman Lembaga Keuangan Non-Bank	51	--	(14.804126.385)	Payment to Financial Institutions/Non Bank
Perolehan Surat Utang Jangka Menengah	51	250000.000.000	--	Receipt from Medium Term Notes
Pembayaran Surat Utang Jangka Menengah	51	(800000000000)	(70.998095.553)	Payment to Medium Term Notes
Pengeluaran ke Entitas Non Pengendali		--	(17.801276.000)	Payment to Non-controlling Interest
Perolehan Utang Lunas dari Pemegang Saham Non-Pengendali		--	275.551438.815	Receipt of Other Payables from Non-controlling Shareholders
Pembayaran Liabilitas Sewa		--	(29.512542.804)	Payment of Lease Liabilities
Perolehan Setoran dan Fasilitas Non-Pengendali		4.840.000.000	--	Receipt from Non-controlling Interest
Kas Bersih Diperoleh dari (Digunakan untuk) Aktivitas Pendanaan		13.3342.12.929.777	(7.407.871.040.382)	Net Cash Provided by (Used in) Financing Activities
<b>KEHAIKAS (PENURUNAN) BERSIH KAS DAN SETARA KAS</b>		11684746.479.111	(6.052.086.872.695)	<b>NET INCREASE (DECREASE) IN CASH AND CASH EQUIVALENTS</b>
<b>KUNTUNGAN (KERUGUAN) SELISIH KURS YANG BELUM DIREALISASI</b>		(6.631.325.860)	17.241.152.852	<b>UNREALIZED GAIN (LOSS) ON FOREIGN EXCHANGE RATE</b>
<b>EFEK INVESTASI</b>		(23.786.274.313)	(10.026.996.683)	<b>EFFECT ON INVESTMENT</b>
<b>KAS DAN SETARA KAS PADA AWAL TAHUN</b>		1213.431.371.866	9.283.310.026.399	<b>CASH AND CASH EQUIVALENTS AT THE BEGINNING OF YEAR</b>
<b>KAS DAN SETARA KAS PADA AKHIR TAHUN</b>		13165781.250.874	1.281.437.371.866	<b>CASH AND CASH EQUIVALENTS AT THE END OF YEAR</b>

Rekonsiliasi liabilitas yang timbul dari aktivitas pendanaan  
(Catatan 51)

Reconciliation of liabilities arising from financing activities  
(Note 51)

Lihat catatan atas laporan keuangan konsolidasian yang  
merupakan bagian yang tidak terpisahkan dari  
laporan keuangan konsolidasian

See accompanying notes to consolidated financial  
statements which are an integral part of  
the consolidated financial statements

**PT WASKITA KARYA (PERSERO) Tbk  
DAN ENTITAS ANAK  
LAPORAN ARUS KAS  
KONSOLIDASIAN INTERIM**  
Untuk Periode-Periode Sembilan Bulan yang Berakhir  
30 September 2022 dan 2021 (Daudit)  
(Ditajikan dalam Rupiah Penuh, kecuali Dinyatakan Lain)

**PT WASKITA KARYA (PERSERO) Tbk  
AND ITS SUBSIDIARIES  
INTERIM CONSOLIDATED STATEMENTS  
OF CASH FLOWS**  
For the Nine-Month Periods Ended  
September 30, 2022 and 2021 (Audited)  
(Expressed in Full Rupiah Amount, unless Otherwise Stated)

Catatan/ Notes	30 September / September 30,		
	2022	2021	
	Rp	Rp	
<b>ARUS KAS DARI AKTIVITAS OPERASI</b>			<b>CASH FLOWS FROM OPERATING ACTIVITIES</b>
Penerimaan Kas dari Pelanggan	12,248,812,028,763	15,481,002,389,420	Cash Receipts from Customers
Pengalokasian Kas kepada Pemilik	(10,164,719,611,883)	(71,387,832,486,487)	Cash Paid to Suppliers
Pengalokasian Kas kepada Karyawan dan Dirinya	(314,137,882,736)	(422,118,273,272)	Cash Paid to Employees and Directors
Kas Dihasilkan dari Operasi	1,769,959,534,144	1,081,382,489,659	Cash Generated from Operations
Pembayaran Utang Keuangan	(1,458,365,820,518)	(922,112,941,303)	Payment of Finance Charges
Pembayaran Fasilitas Pajak	11 254,807,727,438	23,599,840,882	Receipts from Tax Facilities
Pembayaran Pajak	(622,321,514,589)	(825,582,889,268)	Payment of Taxes
Kas Bersih Digunakan untuk Aktivitas Operasi	(488,842,183)	(672,848,702,848)	Net Cash Used in Operating Activities
<b>ARUS KAS DARI AKTIVITAS INVESTASI</b>			<b>CASH FLOWS FROM INVESTING ACTIVITIES</b>
Penerimaan dari Penjualan Berwujud	1,920,201,380,133	137,599,886,224	Receipts from Asset Sales
Pembelian Tanah, Ventura Bersama	(74,584,440,248)	(284,411,453,404)	Placement of Joint Ventures
Pembelian Deposito	3 (30,380,431,271)	(382,038,437,821)	Placement of Time Deposits
Pembelian aset tetap	(908,380,693,271)	(1,023,537,928,811)	Acquisition of Fixed Assets
Penerimaan dari Pengembalian Piutang	-	56,601,717,132	Receipts from Loans Forgiveness
Penerimaan Investasi Jangka Pendek	-	185,528,193,292	Receipts from Short-Term Investments
Penerimaan dari Pihak dan Perusahaan Pihak Entitas Anak dan Asosiasi	622,182,282,040	2,074,533,380,000	Receipts from Disposal of Investment in Subsidiaries
Pembelian aset Tak Berwujud	(1,578,124,821,718)	(1,238,939,828,910)	Acquisition of Intangible Assets
Pembelian Investasi Jangka Pendek	(6,244,713,093)	-	Placement of Short-Term Investments
Pembelian dan Penerimaan Jasa Entitas Asosiasi dan Entitas Terkait Lainnya	(1,219,193,000)	-	Placement of Investment in Associates and and Long-Term Investments
Penerimaan Dividen/keuntungan Entitas Asosiasi	(3,271,102,743,148)	-	Additional Loans in Associates
Kas Bersih Digunakan dan Digunakan untuk Aktivitas Investasi	(8,984,205,978,846)	1,296,665,478,287	Net Cash Provided by/Used in Investing Activities
<b>ARUS KAS DARI AKTIVITAS PENDANAAN</b>			<b>CASH FLOWS FROM FINANCING ACTIVITIES</b>
Penerimaan Utang Obligasi	51 (1,384,000,000,000)	(2,838,000,000,000)	Payment of Bonds Payable
Penerimaan Pinjaman/Utang	190,249,878,839	740,006,813,270	Interest Income from Loans, Accounts and Receipts from Interest Income
Pembayaran Utang Keuangan	(1,074,750,883,071)	(9,286,048,487,228)	Payment of Financial Charges
Pembayaran Utang Obligasi	51 (8,388,323,000)	(2,819,700,000)	Bond Issuance Costs
Pembayaran Utang Sukuk Multibabak	51 (3,207,838,328)	-	Sukuk Multibabak Costs
Penerimaan Pinjaman Obligasi	51 2,127,300,000,000	1,773,000,000,000	Receipts from Bonds Issuance
Penerimaan Pinjaman Sukuk Multibabak	51 1,148,100,000,000	-	Receipts from Sukuk Multibabak
Penerimaan Pinjaman Bank	51 5,448,025,280,441	10,388,841,128,362	Receipts from Bank Loans
Pembayaran Pinjaman Bank	51 (6,027,463,433,823)	(8,975,182,481,406)	Payment of Bank Loans
Penerimaan Pinjaman Utang Saham	51 1,544,370,201,420	-	Receipts from Share Capital Issuance
Penerimaan Pinjaman Ventura/Keuangan Non-Bank	51 1,613,371,201,845	423,823,387,278	Receipts from Financial institutions Non-Bank
Penerimaan Surat Utang Jangka Menengah	51 720,000,000,000	231,498,200,000	Receipts from Medium-Term Notes
Pembayaran Surat Utang Jangka Menengah	51 (200,000,000,000)	(380,000,000,000)	Payment of Medium-Term Notes
Pembayaran Liabilitas Dana	51 (1,433,272,252)	-	Payment of Loans Liabilities
Penerimaan Setoran dari Entitas Non-Pengendali	-	4,880,380,000	Receipts from Non-controlling Interest
Kas Bersih Digunakan dan Akumulasi Pendanaan	1,133,885,441,883	44,552,418,862	Net Cash Provided by/Financing Activities
<b>KEMUKHAAN PENURUNAN BERSIH KAS DAN SETARA KAS</b>	(3,970,277,278,364)	(896,266,133,074)	<b>NET INCREASE (DECREASE) IN CASH AND CASH EQUIVALENTS</b>
<b>KERUGUAN SELURUH KURS YANG SELURUH DISEKUIBARI</b>	(1,719,968,919)	(8,824,175,814)	<b>UNREALIZED LOSS ON FOREIGN EXCHANGE RATE</b>
<b>EFEK INVESTASI</b>	(74,849,978,938)	-	<b>EFFECT ON INVESTMENT</b>
<b>KAS DAN SETARA KAS PADA AWAL PERIODE</b>	10,163,701,258,874	1,213,027,271,884	<b>CASH AND CASH EQUIVALENTS AT THE BEGINNING OF PERIOD</b>
<b>KAS DAN SETARA KAS PADA AKHIR PERIODE</b>	6,183,422,280,510	2,774,889,728,794	<b>CASH AND CASH EQUIVALENTS AT THE END OF PERIOD</b>

Uraian catatan atas laporan keuangan konsolidasian interim yang  
menyajikan bagian yang tidak terpisahkan dari  
laporan keuangan konsolidasian interim

See accompanying notes to interim consolidated financial  
statements which are an integral part of  
the interim consolidated financial statements



**PT WASKITA KARYA (PERSERO) Tbk  
DAN ENTITAS ANAK  
LAPORAN LABA RUGI DAN  
PENGHASILAN KOMPREHENSIF LAIN  
KONSOLIDASIAN INTERIM**

Untuk Periode-Periode Sembilan Bulan yang Berakhir  
30 September 2022 dan 2021 (2021 – Diaudit)  
(Disajikan dalam Rupiah Penuh, kecuali Dinyatakan Lain)

**PT WASKITA KARYA (PERSERO) Tbk  
AND ITS SUBSIDIARIES  
INTERIM CONSOLIDATED STATEMENTS OF  
PROFIT OR LOSS AND  
OTHER COMPREHENSIVE INCOME**

For the Nine-Month Periods Ended  
September 30, 2022 and 2021 (2021 – Audited)  
(Expressed In Full Rupiah Amount, unless Otherwise Stated)

Catatan/ Notes	30 September / September 30,			
	2022	2021 <sup>*)</sup>		
	Rp	Rp		
Pendapatan Usaha	41-55	10.303.730.963.670	7.125.239.093.439	Revenues
Beban Pokok Pendapatan	42	(9.315.574.175.658)	(8.357.829.949.189)	Cost of Revenues
<b>LABA BRUTO</b>		<b>988.156.787.412</b>	<b>767.409.144.290</b>	<b>GROSS PROFIT</b>
Beban Penjualan	43	(29.673.259.216)	(27.393.150.830)	Selling Expenses
Beban Umum dan Administrasi	43	(1.911.462.176.571)	(1.436.995.162.537)	General and Administrative Expenses
Beban Pajak Fiskal	11	(213.668.599.906)	(137.657.956.475)	Fiscal Tax Expenses
Pendapatan Bunga		850.128.903.831	733.181.837.629	Interest Income
Keuntungan (Kerugian) Selisih Kurs Bersih		(2.32.239.130)	179.703.293	Gain (Loss) on Foreign Exchange Rates - Net
Pendapatan Lain - lain - Bersih	44	3.001.270.322.776	3.326.274.416.532	Other Income - Net
<b>LABA SEBELUM BEBAN KEUANGAN, BAGIAN LABA BERSIH ENTITAS ASOSIASI DAN VENTURA BERSAMA</b>		<b>2.682.619.739.196</b>	<b>3.224.998.831.342</b>	<b>PROFIT BEFORE FINANCIAL CHARGES, EQUITY IN NET INCOME OF ASSOCIATES AND JOINT VENTURES</b>
Beban Keuangan	45	(3.031.41.408.575)	(2.546.365.926.543)	Financial Charges
Daglar Laba (Rugi) Daerah Entitas Asosiasi dan Ventura Bersama	46	1.182.633.911.540	(212.713.919.236)	Equity in Net Profit (Loss) of Associates and Joint Ventures
<b>LABA SEBELUM PAJAK</b>		<b>834.112.242.561</b>	<b>465.918.986.803</b>	<b>PROFIT BEFORE TAX</b>
Beban Pajak Penghasilan	11	(255.935.723.272)	(399.201.137.954)	Income Tax Expenses
<b>LABA PERIODE BERJALAN</b>		<b>578.176.519.289</b>	<b>66.717.848.849</b>	<b>PROFIT FOR THE PERIOD</b>
<b>PENGHASILAN (BEBAN) KOMPREHENSIF LAIN</b>				<b>OTHER COMPREHENSIVE INCOME (LOSS)</b>
Pos-pos yang Tidak Akan Direklasifikasi Kemudian ke Laba Rugi				Items that Will Not Be Reclassified to Profit and Loss
Surplus Revaluasi Aset Tetap		-	35.835.199.895	Revaluation Surplus on Fixed Assets
Pengukuran Kembali Program Irbakan Pasti - Bersih		(3.197.450.259)	8.992.672.249	Remeasurement of Defined Benefit Obligations - Net
Pos-pos yang Akan Direklasifikasi Kemudian ke Laba Rugi				Items that May Be Reclassified Subsequently to Profit and Loss
Selisih Kurs Penjabaran Laporan Keuangan dari Kegiatan Operasi Luar Negeri		24.029.207	165.460.960	Exchange Difference on Translation of Financial Statements in Foreign Operations
Penghasilan (Beban) Komprehensif Lain Periode		(3.173.421.052)	44.993.331.304	Total Other Comprehensive Income (Loss) For The Period
<b>TOTAL LABA KOMPREHENSIF PADA PERIODE BERJALAN</b>		<b>574.803.098.237</b>	<b>111.711.179.853</b>	<b>TOTAL COMPREHENSIVE INCOME FOR THE PERIOD</b>
<b>LABA (RUGI) YANG DAPAT DIATRIBUSIKAN KEPADA:</b>				<b>PROFIT (LOSS) ATTRIBUTABLE TO:</b>
Pemilik Entitas Induk		425.292.349	174.407.064.96	Owners of the Parent Entity
Kepentingan Non-Pengendali	47	(577.751.226.540)	(107.689.216.147)	Non-controlling Interest
<b>LABA PERIODE BERJALAN</b>		<b>578.176.519.289</b>	<b>66.717.848.849</b>	<b>PROFIT FOR THE PERIOD</b>
<b>JUMLAH LABA (RUGI) KOMPREHENSIF YANG DAPAT DIATRIBUSIKAN KEPADA:</b>				<b>TOTAL COMPREHENSIVE INCOME (LOSS) ATTRIBUTABLE TO:</b>
Pemilik Entitas Induk		(2.948.128.703)	219.400.396.00	Owners of the Parent Entity
Kepentingan Non-Pengendali	47	577.751.226.540	(107.689.216.147)	Non-controlling Interest
<b>JUMLAH LABA KOMPREHENSIF PADA PERIODE BERJALAN</b>		<b>574.803.098.237</b>	<b>111.711.179.853</b>	<b>TOTAL COMPREHENSIVE INCOME FOR THE PERIOD</b>
Labas per saham Dasar	48	001	1285	Profit per share Basic

\*) Direklasifikasi pada Catatan 40

\*) As reclassified in Note 40

Lihat catatan atas laporan keuangan konsolidasian interim yang merupakan bagian yang tidak terpisahkan dari laporan keuangan konsolidasian interim

See accompanying notes to interim consolidated financial statements which are an integral part of the interim consolidated financial statements

**PT WASKITA KARYA (PERSERO) Tbk DAN ENTITAS ANAK**  
**LAPORAN PERUBAHAN EKUITAS KONSOLIDASIAN INTERIM**  
 Untuk Periode-Periode Sembilan Bulan yang Berakhir 30 September 2022 dan 2021 – Diaudit)  
 (Disajikan dalam Rupiah Penuh, kecuali Dinyatakan Lain)

**PT WASKITA KARYA (PERSERO) Tbk AND ITS SUBSIDIARIES**  
**INTERIM CONSOLIDATED STATEMENTS OF CHANGES IN EQUITY**  
 For the Nine-Month Periods Ended September 30, 2022 and 2021 – Audited)  
 (Expressed in Full Rupiah Amount, unless Otherwise Stated)

Dapat Diambil sebagai Perkiraan Entitas Individu / Extractable in the Context of the Parent

Kategori / Kategori	Perubahan Modal				Korupsi Entitas Lain				Korupsi Entitas Lain				Jumlah Ekuitas / Total Equity	
	Modal Sah / Share Capital		Saldo Awal / Initial Balance		Saldo Awal / Initial Balance		Saldo Awal / Initial Balance		Saldo Awal / Initial Balance		Saldo Awal / Initial Balance			
	Rp	Rp	Rp	Rp	Rp	Rp	Rp	Rp	Rp	Rp	Rp	Rp		
30/09/2022	1.577.388.788.000	6.640.000.000.000	1.720.911.307.000	6.620.000.000.000	6.702.021.164.000	674.428.673	78.138.648.810	3.796.887.716.704	6.020.699.770.744	71.429.568.488.000				BALANCE AS OF SEPTEMBER 30, 2022
42	-	-	-	6.600.000.000.000	-	-	-	-	-	-	-	-	-	General Reserve
47	-	-	-	-	-	-	-	-	6.000.000.000.000	6.000.000.000.000	-	-	-	Non-Carrying Interest
	-	-	-	-	-	-	-	-	3.820.198.198	3.820.198.198	-	-	-	Reserve for Share Buyback
	-	-	-	-	-	-	-	-	174.407.841.196	174.407.841.196	-	-	-	Profit or Loss Carry Forward
47	-	-	20.000.000.000	-	20.000.000.000	-	-	-	18.811.483.102	18.811.483.102	-	-	-	Adjustment for Change in Ownership
	-	-	-	-	-	-	-	-	1.022.801.702	1.022.801.702	-	-	-	Measurement of Cashflow
	-	-	-	-	-	-	-	-	1.022.801.702	1.022.801.702	-	-	-	Reserve for Net
	-	-	-	-	-	-	-	-	6.000.000.000.000	6.000.000.000.000	-	-	-	Exchange Rate Difference on Translation of Financial Statements in Foreign Currency
30/09/2021	1.577.388.788.000	6.640.000.000.000	1.720.911.307.000	6.620.000.000.000	6.702.021.164.000	674.428.673	78.138.648.810	3.796.887.716.704	6.020.699.770.744	71.429.568.488.000				BALANCE AS OF SEPTEMBER 30, 2021
31/03/2022	1.577.388.788.000	6.640.000.000.000	1.720.911.307.000	6.620.000.000.000	6.702.021.164.000	674.428.673	78.138.648.810	3.796.887.716.704	6.020.699.770.744	71.429.568.488.000				BALANCE AS OF MARCH 31, 2022
31/03/2021	1.577.388.788.000	6.640.000.000.000	1.720.911.307.000	6.620.000.000.000	6.702.021.164.000	674.428.673	78.138.648.810	3.796.887.716.704	6.020.699.770.744	71.429.568.488.000				BALANCE AS OF MARCH 31, 2021
31/03/2022	1.577.388.788.000	6.640.000.000.000	1.720.911.307.000	6.620.000.000.000	6.702.021.164.000	674.428.673	78.138.648.810	3.796.887.716.704	6.020.699.770.744	71.429.568.488.000				BALANCE AS OF MARCH 31, 2022
31/03/2021	1.577.388.788.000	6.640.000.000.000	1.720.911.307.000	6.620.000.000.000	6.702.021.164.000	674.428.673	78.138.648.810	3.796.887.716.704	6.020.699.770.744	71.429.568.488.000				BALANCE AS OF MARCH 31, 2021

Lihat catatan atas laporan keuangan konsolidasian interim yang merupakan bagian yang tidak terpisahkan dari laporan keuangan konsolidasian interim

See accompanying notes to interim consolidated financial statements which are an integral part of the interim consolidated financial statements